



LUNEBERG REFLECTORS
MONOSTATIC EQUATORIAL
RECTILINEAR POLARIZATION

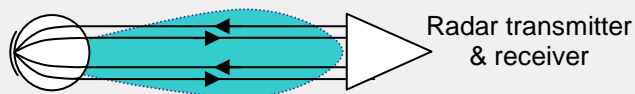
R.C.S. Measurements

We guarantee the specifications. The reflector is delivered with 3 points of measurement (0° / -15° / +15° of sight at 0° of azimuth). The delivered measurement corresponds to the measurement of the lens alone.
Moreover the reflector can be used from S band to Ku band.
Further measurement options (patterns, other frequencies...) on specific request.



Response

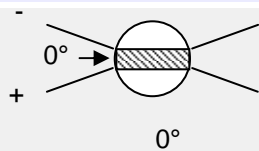
Monostatic



Polarization

Rectilinear. The reflected wave is on the same plane as the wave interrogating the reflector.

Metallization



Metallization on ± 20°
Measurements at ± 15°

Radom

Waterproof composite protection (also against salted ambiance). Acceleration – vibration tests have been passed allowing mounting in supersonic targets

Standard composite fixing (in option)

Development of any other fixing at request



RCS values are guaranteed for lenses without fixing

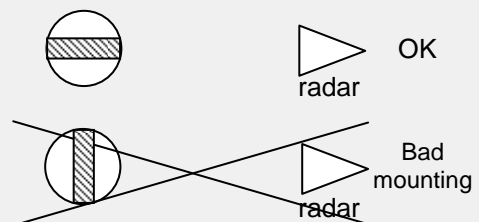
Specific unit packaging



⚠ Precautions of use

The response of the lens depends on the environment.

- Avoid thick fairing
- Avoid fairing made of dielectrical material with important losses
- Avoid any object (especially metallic) positioned between the lens and the radar (strap, screw...)
- Take care in mounting





LUNEBERG REFLECTORS
MONOSTATIC EQUATORIAL
RECTILINEAR POLARIZATION

New

New

Reference	Frequency range	Measuring frequency (GHz)	Minimum Radar Cross Section guaranteed (sqm)		Diameter of the reflector without fixing		Weight without fixing (kg)
			R.C.S. in the equatorial plane	R.C.S. at ± 15° of sight	(inches)	(cm)	
XER06	X	9.375	0.5	à ±15° 0.25	6.0	15	0.8
XER07	X	9.375	1.0	à ±15° 0.3	7.0	18	1.3
XER10	X	9.375	6.0	à ±15° 2.0	10.0	25	3.8
XER12.5	X	9.375	11.0	à ±15° 8.0	12.5	32	7.4

* RCS values are guaranteed for lenses without fixing

